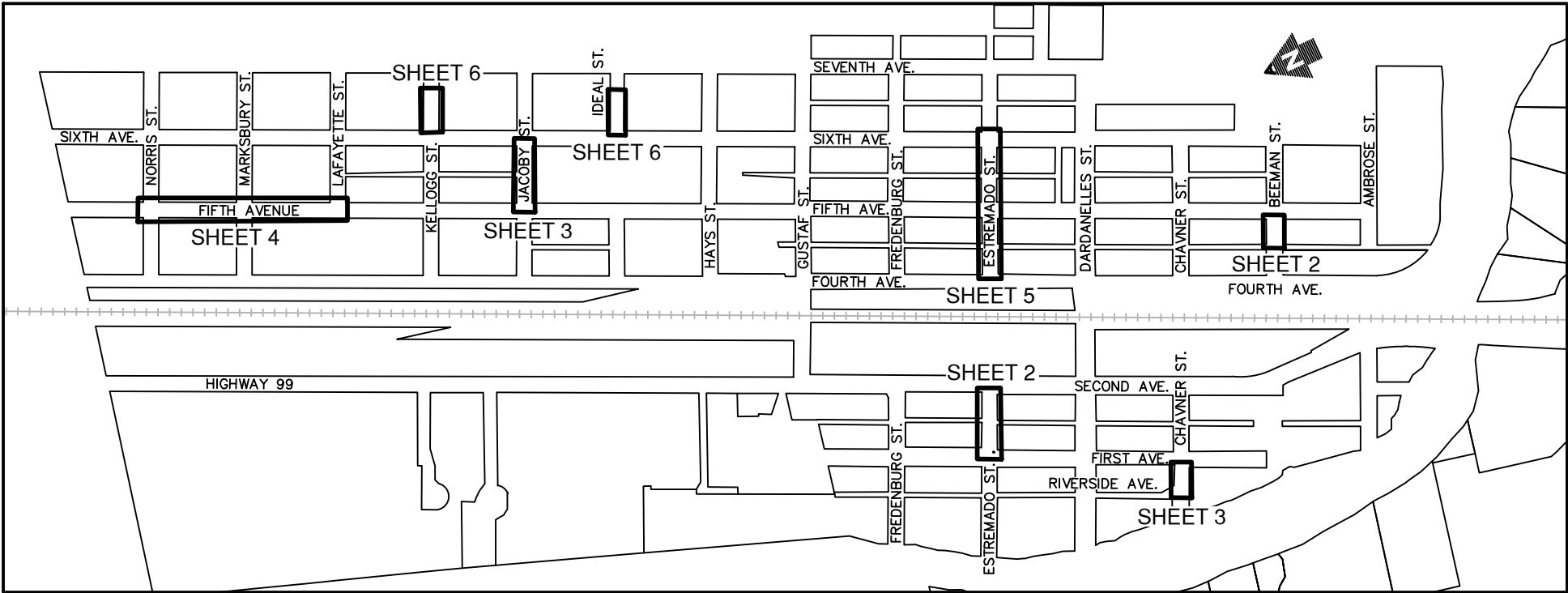


SMALL CITY ALLOTMENT PROGRAM
STREET IMPROVEMENTS
FOR
CITY OF GOLD HILL, OREGON



VICINITY MAP & SHEET INDEX
N.T.S.



AREA MAP
N.T.S.

NOTES

1. NOT ALL MANHOLES AND/OR VALVE BOXES MAY BE SHOWN. ADJUST ALL MANHOLES AND VALVE BOXES ENCOUNTERED DURING CONSTRUCTION TO MATCH NEW FINISH GRADE.

SHEET INDEX

1. COVER SHEET & SHEET INDEX
2. ESTREMADO ST (FIRST AVE. TO SECOND AVE.)
BEEMAN ST. (END OF ALLEY TO END)
3. CHAVNER ST.
JACOBY ST. (FIFTH AVE. TO SIXTH AVE.)
4. FIFTH AVE. (NORRIS ST. TO MARKSBURY ST.)
FIFTH AVE. (MARKSBURY ST. TO LAFAYETTE ST.)
5. ESTREMADO ST. (FOURTH AVE. TO FIFTH AVE.)
ESTREMADO ST. (FIFTH AVE. TO SIXTH AVE.)
6. IDEAL ST. (SIXTH AVE. TO END)
KELLOGG ST. (SIXTH AVE. TO END)
7. DETAILS

PROJECT CONTACT INFORMATION

OWNER
CITY OF GOLD HILL
420 SIXTH AVE.
GOLD HILL, OR 97525

CIVIL ENGINEER & SURVEYOR
ADKINS ENGINEERING & SURVEYING
1435 ESPLANADE AVENUE
KLAMATH FALLS, OR 97601
(541) 884-4666

CITY OFFICIALS

MAYOR
RONALD PALMER

CITY COUNCIL
JANET WILSON
MELIA BIEDSCHEID
RICK MARTIN
JAMES NEWSTEAD
BILL RIGNEY
SHERRY STANCLIFF

INTERIM MANAGER
ADAM HANKS

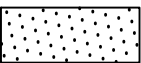
RECORDER
DEE LAREZ

CLERK
KERI LEWIS

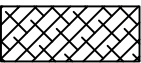
ABBREVIATIONS

A/C ASPHALTIC CONCRETE
ACP ASPHALTIC CONCRETE PAVEMENT
CB CATCH BASIN
CL CENTERLINE
DW DRIVEWAY
EG EXISTING GRADE
EP EDGE OF PAVEMENT
EXTG EXISTING
FG FINISH GRADE
HMAC HIGH-MODULUS A/C MIXTURE
LF LINEAL FEET
MIN MINIMUM
MH MANHOLE
NTS NOT TO SCALE
R RADIUS
SF SQUARE FEET
TYP TYPICAL
W/ WITH

LEGEND / WORK ITEMS



COLD PLANE PAVEMENT REMOVAL, 3 INCHES THICK;
LEVEL 2, 1/2 INCH ACP MIXTURE, 3 INCHES THICK
(INCLUDES 3 INCHES WEARING COURSE IN DIGOUT AREAS)
BID ITEM NO.'S 5 & 7



DIGOUT REPAIR (COLD PLANE PAVEMENT REMOVAL, 3 INCHES THICK)
DIGOUT REPAIR (LEVEL 2, 1/2 INCH ACP MIXTURE, 3 INCHES THICK)
SEE DETAIL 2, SHEET 7
BID ITEM NO.'S 6 & 8



DIGOUT REPAIR (COLD PLANE PAVEMENT REMOVAL, 6 INCHES THICK)
DIGOUT REPAIR (LEVEL 2, 1/2 INCH ACP MIXTURE, 3 INCHES THICK)
SEE DETAIL 2, SHEET 7
BID ITEM NO.'S 6 & 8



24 INCH WIDE COMPACTED GRAVEL SHOULDER ROCK
ALONG EDGE OF OVERLAY, TAPER FROM 3 TO 0 INCHES.
SEE DETAIL 1, SHEET 7
ADDITIVE ALTERNATIVE BID ITEM NO. 4



LEVEL 2, 1/2 INCH ACP MIXTURE, 3 INCHES THICK
OVER EXISTING GRAVEL
SEE DETAIL 1, SHEET 7
ADDITIVE ALTERNATIVE BID ITEM NO. 5



MANHOLE - ADJUST TO FINISH GRADE



WATER VALVE - ADJUST TO FINISH GRADE



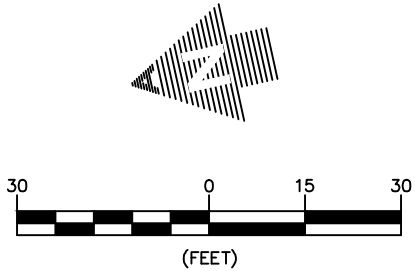
RENEWAL 12/31/24

No.	REVISION	DATE	BY

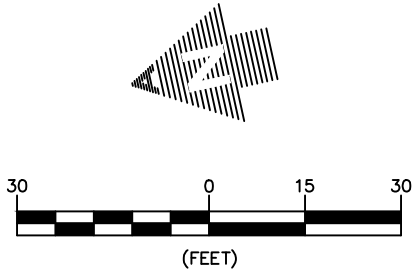
SMALL CITY ALLOTMENT PROGRAM
STREET IMPROVEMENTS
CITY OF GOLD HILL, OREGON
COVER PAGE & SHEET INDEX

ADKINS
ENGINEERING & SURVEYING
e / 541.884.4666
w / AdkinsEngineering.com
1435 ESPLANADE AVENUE, KLAMATH FALLS, OR 97601
SERVING S. OREGON & N. CALIFORNIA
ENGINEERING • SURVEYING • PLANNING • TESTING

DATE:	5-9-2023
PROJECT:	3831-07
FILE:	DESIGN
DESIGNED BY:	JMM
DRAWN BY:	DRK
CHECKED BY:	JMM
SURVEYED BY:	N/A
SCALE:	AS SHOWN
SHEET:	1 OF 7



ESTREMADO ST. (FOURTH AVE. TO FIFTH AVE.)



RENEWAL 12/31/24

ESTREMADO ST. (FIFTH AVE. TO SIXTH AVE.)

ADKINS

ENGINEERING & SURVEYING

1435 ESPLANADE AVENUE, KLAMATH FALLS, OR 97601

541.884.4666

w / AdkinsEngineering.com

SERVING S. OREGON & N. CALIFORNIA

ENGINEERING • SURVEYING • PLANNING • TESTING

DATE: 5-9-2023

PROJECT: 3831-07

FILE: DESIGN

DESIGNED BY: JMM

DRAWN BY: DRK

CHECKED BY: JMM

SURVEYED BY: ACE

SCALE: 1" = 30'

SHEET: 5 OF 7

5

No.	REVISION	DATE	BY

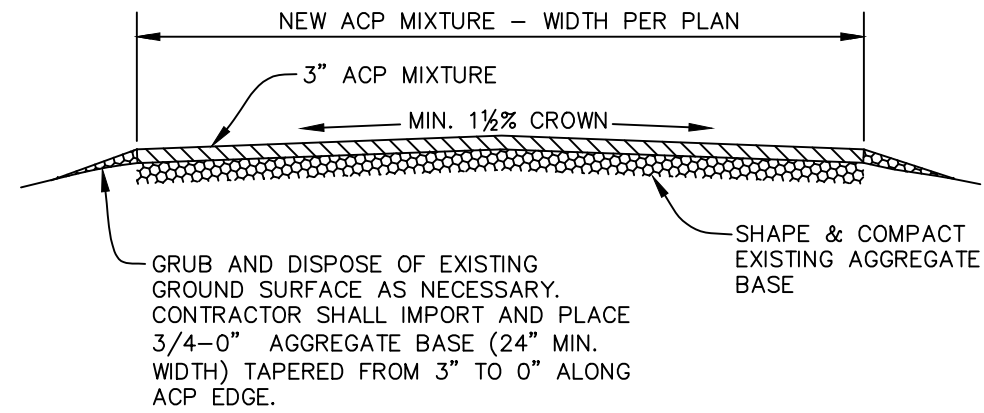
SMALL CITY ALLOTMENT PROGRAM

STREET IMPROVEMENTS

CITY OF GOLD HILL, OREGON

ESTREMADO ST. (FOURTH AVE. TO FIFTH AVE.)

ESTREMADO ST. (FIFTH AVE. TO SIXTH AVE.)

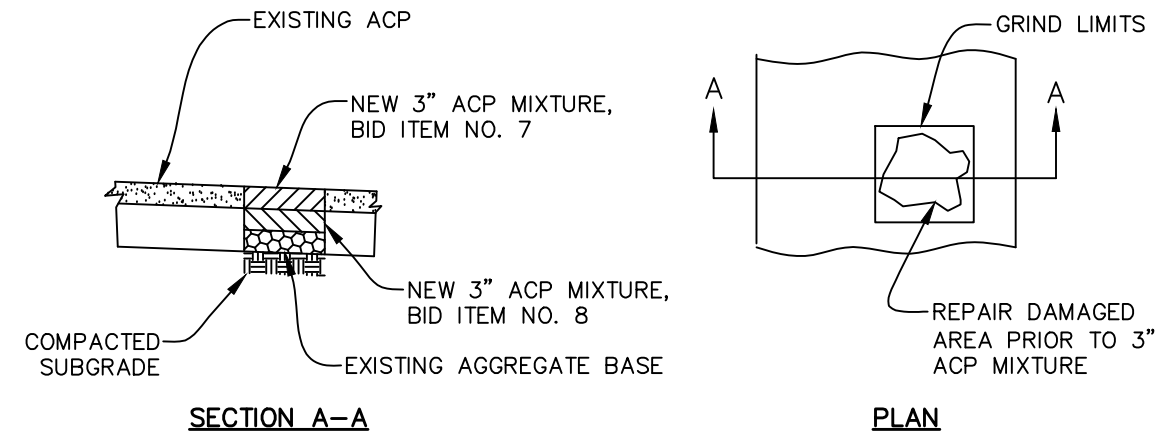


NOTES

1. CONTRACTOR TO BUTT GRIND AT TIE-IN TO EXISTING ASPHALT

1 ASPHALT OVERLAY
N.T.S.

N.T.S.



NOTES

1. ENGINEER TO MARK REPAIR LIMITS PRIOR TO CONSTRUCTION.

② DIGOUT REPAIR
N.T.S.

N.T.S.



RENEWAL 12/31/24

[illegible]

**SMALL CITY ALLOTMENT PROGRAM
STREET IMPROVEMENTS
CITY OF GOLD HILL, OREGON**

DETAILS

ALEADKINS
ENGINEERING & SURVEYING
o / 541.864.4666
w / AdkinsEngineering.com
1435 ESPLANADE AVENUE, KLAMATH FALLS, OR 97601

SERVING S. OREGON & N. CALIFORNIA
ENGINEERING • SURVEYING • PLANNING • TESTING

DATE:	5-9-2023
PROJECT:	3831-07
TITLE:	DESIGN
DESIGNED BY:	JMM
DRAWN BY:	DRK
CHECKED BY:	JMM
SURVEYED BY:	ACE
SCALE:	AS NOTED
SHEET:	7 OF 7

PROJECT: 3831-07

FILE: DESIGN

DESIGNED BY: JMM

DRAWN BY: DRK

CHECKED BY: JMM

SURVEYED BY: ACE

SCALE: AS NOTED

SHEET: 7 OF 7

7